



P ~~N~~ H

FURN<sup>®</sup>  
HOTTES

PROFESSIONAL  
EXTRACTION  
SOLUTIONS





FOR THOSE WHO ARE LOOKING FOR A PARTNER WHO SELLS  
QUALITY AND SERVICE, AS WELL AS STAINLESS STEEL  
FURNITURE & EQUIPMENT, WE ARE THE SOLUTION!

# ÍNDICE

INDEX \* INDEX \* INDICE



**08**

HOTTES DE COZINHA

EXTRACTION HOODS \* HOTTES \* CAMPANAS

**10**

HOTTES INCLINADAS

SLOPING HOODS \* HOTTES INCLINÉES \* CAMPANAS INCLINADAS

**18**

HOTTES RETANGULARES

RECTANGULAR HOODS \* HOTTES RECTANGULAIRES \* CAMPANAS RECTANGULARES



**PNH JÁ CONTA COM MAIS DE 47 ANOS** DE EXPERIÊNCIA NA ÁREA DA METALURGIA E METALOMECÂNICA, TENDO ATUALMENTE UMA POSIÇÃO CONSOLIDADA NO MERCADO DA PRODUÇÃO E COMERCIALIZAÇÃO DE MOBILIÁRIO E EQUIPAMENTOS HOTELEIROS E HOSPITALARES, EM AÇO INOX.

Alicerçada numa política sustentada de crescimento e assegurando o cumprimento das expectativas dos nossos clientes, a marca PNH é hoje reconhecida como uma referência na sua área de atividade.

Os constantes investimentos em inovação e tecnologia, ajudam-nos a estar presentes em mercados de grande exigência e permitem-nos ter uma carteira de clientes fidelizados, bem como o seu reconhecimento.

Consideramos a **nossa Política da Qualidade** como **um dos pilares fundamentais do sucesso da empresa**, guiando-nos no sentido da obtenção da melhor qualidade, da melhoria contínua e do melhor desempenho possível.

Tendo em vista a melhoria contínua, avaliamos regularmente o nosso desempenho de forma a atingirmos os objetivos e metas por nós estabelecidos, adequando a nossa Política de Qualidade à constante evolução das atividades, produtos, serviços e relacionamento com as partes interessadas.

O nosso futuro traduz-se na procura incansável da satisfação máxima de todos aqueles que conosco se relacionam.

EN

PNH HAS MORE THAN 47 YEARS OF EXPERIENCE IN THE METALLURGY AND METALWORKING INDUSTRIES, HAVING NOWADAYS A CONSOLIDATED POSITION IN THE MARKET OF PROFESSIONAL STAINLESS STEEL FURNITURE & EQUIPMENT PRODUCTION, FOR HOTELS AND HOSPITALS.

Based on a sustained policy of growth and ensuring the fulfilment of our customers' expectations, the PNH brand is today recognized as a reference in its area of activity.

The constant investment in innovation and technology, help us to be present in highly demanding markets and allow us to have a portfolio of loyal customers, as well as their recognition.

We consider our Quality Policy as one of the fundamental pillars in the company's success, guiding us towards obtaining the best quality, continuous improvement and the best possible performance.

Having this in mind, we regularly evaluate our performance in order to achieve the objectives and goals established by us, adapting our Quality Policy to the constant evolution of activities, products, services and relationships with stakeholders.

Our future translates into the relentless pursuit of maximum satisfaction for all those who relate to us.

FR

PNH A PLUS DE 47 ANS D'EXPÉRIENCE DANS LE DOMAINE DE LA MÉTALLURGIE ET DE LA MÉTALLOMÉCANIQUE, AYANT AUJOURD'HUI UNE POSITION CONSOLIDÉE SUR LE MARCHÉ DE LA PRODUCTION ET DE LA VENTE DE MOBILIER ET D'ÉQUIPEMENTS HÔTELIERS ET HOSPITALIERS, EN ACIER INOXYDABLE.

Basée sur une politique de croissance soutenue et assurant la satisfaction des attentes de nos clients, la marque PNH est aujourd'hui reconnue comme une référence dans son domaine d'activité.

Les investissements constants dans l'innovation et la technologie, nous aident à être présents sur des marchés très exigeants et nous permettent d'avoir un portefeuille de clients fidèles, ainsi que leur reconnaissance.

Nous considérons notre politique de qualité comme l'un des piliers fondamentaux du succès de l'entreprise, qui nous guide vers l'obtention de la meilleure qualité, l'amélioration continue et les meilleures performances possibles.

Dans une optique d'amélioration continue, nous évaluons régulièrement nos performances afin d'atteindre les objectifs et les buts que nous nous sommes fixés, en adaptant notre politique de qualité à l'évolution constante des activités, des produits, des services et des relations avec les parties prenantes.

Notre avenir se traduit par la recherche incessante d'une satisfaction maximale pour tous ceux qui nous entourent.

ES

PNH TIENE MÁS DE 47 AÑOS DE EXPERIENCIA EN EL ÁREA DE LA METALURGIA Y METALOMECÁNICA, TENIENDO ACTUALMENTE UNA POSICIÓN CONSOLIDADA EN EL MERCADO DE LA PRODUCCIÓN Y VENTA DE MOBILIARIO Y EQUIPAMIENTO HOTELERO Y HOSPITALARIO, EN ACERO INOXIDABLE.

Basándose en una política de crecimiento sostenido y asegurando el cumplimiento de las expectativas de nuestros clientes, la marca PNH es ahora reconocida como una referencia en su área de actividad.

Las constantes inversiones en innovación y tecnología, nos ayudan a estar presentes en mercados altamente exigentes y nos permiten tener una cartera de clientes fieles, así como su reconocimiento.

Consideramos nuestra Política de Calidad como uno de los pilares fundamentales del éxito de la empresa, que nos guía hacia la obtención de la mejor calidad, la mejora continua y el mejor rendimiento posible.

Con miras a la mejora continua, evaluamos regularmente nuestro desempeño para alcanzar los objetivos y metas establecidos por nosotros, adaptando nuestra Política de Calidad a la constante evolución de las actividades, productos, servicios y relaciones con las partes interesadas.

Nuestro futuro se traduce en la búsqueda incesante de la máxima satisfacción de todos los que se relacionan con nosotros.



N

Com vista à obtenção da melhor qualidade, da melhoria contínua e do melhor desempenho possível, a PNH é uma empresa certificada pela norma EN **ISO 9001:2015**, atribuída pela **SGS**.

A ISO 9001 é a norma de Sistemas de Gestão mais utilizada mundialmente, sendo a referência internacional para a Certificação de Sistemas de Gestão da Qualidade (SGQ).



Já a marca NF atribui uma garantia indiscutível que de os produtos certificados estão aptos para o uso alimentar.

O certificado **NF de higiene alimentar**, atribuído pelo grupo **AFNOR**, garante que a nossa gama de estanteria de alumínio e polietileno modular cumpre com os standards de segurança, utilização e qualidade, de acordo com a normativa técnico-sanitária vigente.



### EN

In order to achieve the best possible quality, continuous improvement and performance, PNH is an EN **ISO 9001:2015** certified company, issued by **SGS**.

ISO 9001 is the most widely used Management Systems standard worldwide, and is the international reference for the Certification of Quality Management Systems (QMS).

The NF brand provides an indisputable guarantee that certified products are suitable for food use.

The **NF certificate for food hygiene**, issued by the **AFNOR** group, guarantees that our range of aluminium and polyethylene modular shelving meets the standards of safety, use and quality, in accordance with the technical-sanitary regulations in force.

### FR

Afin d'atteindre la meilleure qualité possible, l'amélioration continue et la performance, PNH est une entreprise certifiée par la norme EN **ISO 9001:2015**, attribuée par **SGS**.

ISO 9001 est la norme, des systèmes de management, la plus utilisée dans le monde et constitue la référence internationale pour la certification des Systèmes de Gestion de la Qualité (SGQ).

La marque NF offre une garantie incontestable sur le fait que les produits certifiés sont aptes à l'usage alimentaire.

Le certificat **NF d'hygiène alimentaire**, délivré par le groupe **AFNOR**, garantit que notre gamme de rayonnages modulaires en aluminium et polyéthylène répond aux normes de sécurité, d'utilisation et de qualité, conformément à la réglementation technico-sanitaire en vigueur.

### ES

Para lograr la mejor calidad posible, la mejora continua y el rendimiento, PNH es una empresa con certificación EN **ISO 9001:2015**, otorgada por **SGS**.

La norma ISO 9001 es la más utilizada en todo el mundo para los sistemas de gestión, y es la referencia internacional para la certificación de los Sistemas de Gestión de la Calidad (SGC).

La marca NF ofrece una garantía indiscutible de que los productos certificados son aptos para el uso alimentario.

El certificado **NF de higiene alimentaria**, otorgado por el grupo **AFNOR**, garantiza que nuestra gama de estanterías modulares de aluminio y polietileno cumple las normas de seguridad, uso y calidad, de acuerdo con la normativa técnico-sanitaria vigente.

# AMIGA DO AMBIENTE

ECO-FRIENDLY \* ÉCOLOGIQUE \* ECOLÓGICA



- \* Todos os aspetos ambientais são sistematicamente identificados, controlados e monitorizados de modo a garantir a melhoria contínua do desempenho ambiental.
- \* O material utilizado nos nossos produtos é 100% reciclável.
- \* Todas as embalagens de cartão que usamos são 100% reutilizáveis.
- \* Garantimos o tratamento final das embalagens de cartão, através de contrato com a empresa especializada Ponto Verde.
- \* Asseguramos o tratamento final dos produtos elétricos, através de contrato com a empresa Amb3e, especializada para o efeito.

EN

- \* All environmental aspects are systematically identified, controlled and monitored to ensure continuous improvement of environmental performance.
- \* The material used in our products is 100% recyclable.
- \* All cardboard packaging we use is 100% reusable.
- \* We guarantee the final treatment of the cardboard packaging, through a contract with the legally specialised Ponto Verde company.
- \* We guarantee the final treatment of the electrical products, through a contract with the company Amb3e, specialized for this purpose.

FR

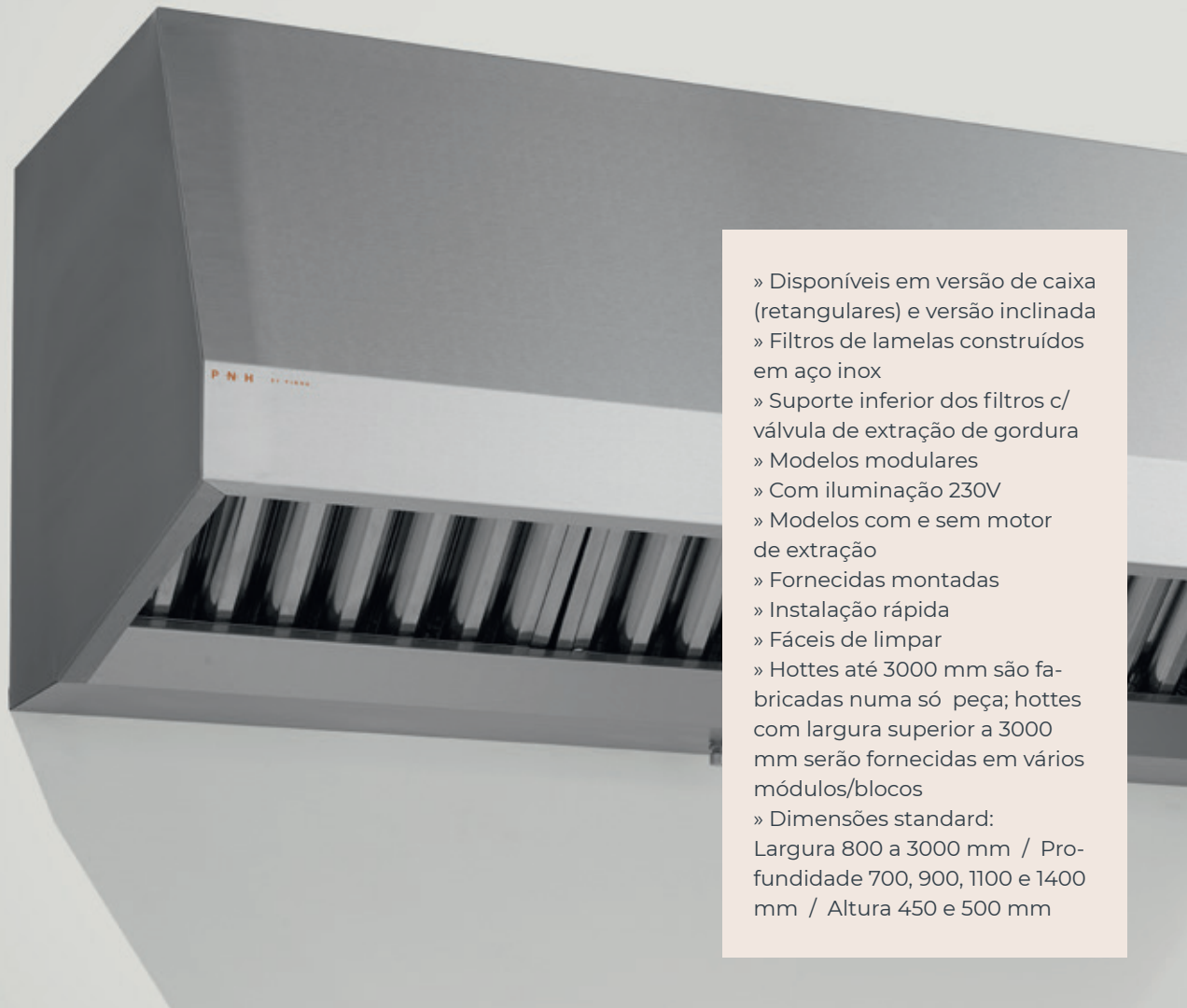
- \* Tous les aspects environnementaux sont systématiquement identifiés, contrôlés et surveillés afin de garantir une amélioration continue des performances environnementales.
- \* Les matériaux utilisés dans nos produits sont 100% recyclables.
- \* Tous les emballages en carton que nous utilisons sont 100% réutilisables.
- \* Nous garantissons le traitement final des emballages en carton, par le biais d'un contrat avec la société Ponto Verde, juridiquement spécialisée.
- \* Nous garantissons le traitement final des produits électriques, grâce à un contrat avec la société Amb3e, spécialisée à cet effet.

ES

- \* Todos los aspectos ambientales se identifican, controlan y supervisan sistemáticamente para garantizar la mejora continua del rendimiento ambiental.
- \* El material utilizado en nuestros productos es 100% reciclable.
- \* Todos los envases de cartón que usamos son 100% reutilizables.
- \* Garantizamos el tratamiento final del embalaje de cartón, a través de un contrato con la empresa Ponto Verde, legalmente especializada.
- \* Garantizamos el tratamiento final de los productos eléctricos, a través de un contrato con la empresa Amb3e, especializada para este fin.

# HOTTES DE COZINHA

EXTRACTION HOODS \* HOTTES DE CUISINE \* CAMPANAS DE EXTRACCIÓN



- » Disponíveis em versão de caixa (retangulares) e versão inclinada
- » Filtros de lamelas construídos em aço inox
- » Suporte inferior dos filtros c/ válvula de extração de gordura
- » Modelos modulares
- » Com iluminação 230V
- » Modelos com e sem motor de extração
- » Fornecidas montadas
- » Instalação rápida
- » Fáceis de limpar
- » Hottes até 3000 mm são fabricadas numa só peça; hottes com largura superior a 3000 mm serão fornecidas em vários módulos/blocos
- » Dimensões standard:  
Largura 800 a 3000 mm / Profundidade 700, 900, 1100 e 1400 mm / Altura 450 e 500 mm

EN

- Available in box version (rectangular) and sloping version
- Flap filters made of stainless steel
- Filter bottom support with grease extraction valve
- Modular models
- With 230V lighting
- Models with and without extraction motor
- Supplied assembled
- Quick to install
- Easy to clean
- Hoods up to 3000 mm are made in one piece; from 3000 mm upwards they are supplied in several modules/parts
- Standard dimensions: Width 800 to 3000 mm / Depth 700, 900, 1100 and 1400 mm / Height 450 and 500 mm

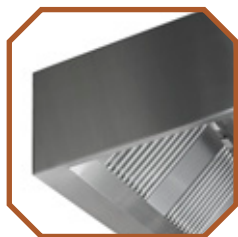
FR

- Disponible en version boîte (rectangulaire) et en version inclinée.
- Filtres à lamelles en acier inoxydable
- Support inférieur du filtre avec valve d'extraction des graisses
- Modèles modulaires
- Avec éclairage 230V
- Modèles avec et sans moteur d'extraction
- Fourni assemblé
- Installation rapide
- Facile à nettoyer
- Les hottes jusqu'à 3000 mm sont fabriquées en monobloc; à partir de 3000 mm elles sont fournies en plusieurs pièces/ modules
- Dimensions standard: Largeur 800 à 3000 mm / Profondeur 700, 900, 1100 et 1400 mm / Hauteur 450 et 500 mm

ES

- Disponible en versión caja (rectangular) y en versión inclinada
- Filtros con láminas de acero inoxidable
- Soporte inferior de los filtros con válvula de extracción de grasa
- Modelos modulares
- Con iluminación de 230V
- Modelos con y sin motor de extracción
- Se suministra montado
- Rápido de instalar
- Fácil de limpiar
- Modelos de más de 3000 mm disponibles
- Las campanas hasta 3000 mm se fabrican en una sola pieza; a partir de 3000 mm se suministran en varias piezas/módulos
- Dimensiones estándar: Ancho 800 a 3000 mm / Profundidad 700, 900, 1100 y 1400 mm / Altura 450 y 500 mm





Construção geral em aço inox adequado para uso alimentar, com espessura de 0,8 mm.

**EN** General construction in food grade stainless steel, 0.8 mm thick.

**FR** Construction générale en acier inoxydable adapté à l'usage alimentaire, épaisseur 0,8 mm.

**ES** Construcción general en acero inoxidable apto para uso alimentario, de 0,8 mm de espesor.



Painéis laterais amovíveis, permitindo acoplar outros módulos.

**EN** Removable side panels, allowing other modules to be attached.

**FR** Panneaux latéraux amovibles, permettant de fixer d'autres modules.

**ES** Paneles laterales desmontables, que permiten acoplar otros módulos.

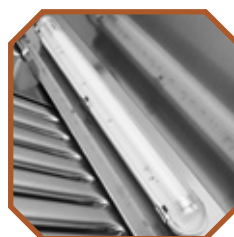


Possibilidade de aplicar motor de extração em todos os modelos de hottes, mediante pedido.

**EN** An extraction motor can be fitted to all hood/canopy models, on request.

**FR** Possibilité d'installer un moteur d'extraction sur tous les modèles de hottes, sur demande.

**ES** Posibilidad de aplicar un motor de extracción en todos los modelos de campanas, bajo pedido.

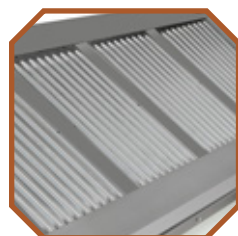


Iluminação incluída. O número e potência das lâmpadas varia consoante a dimensão da hotte.

**EN** Lighting included. Number of lamps and power varies according to hood size.

**FR** Éclairage inclus. Le nombre et la puissance des lampes varient en fonction de la taille de la hotte.

**ES** Iluminación incluida. El número y la potencia de las lámparas varía según el tamaño de la campana.



Os filtros de inox são vendidos em separado. O número de filtros varia consoante a dimensão da hotte.

**EN** Stainless steel filters sold separately. The number of filters varies according to hood size.

**FR** Les filtres en acier inoxydable sont vendus séparément. Le nombre de filtres varie en fonction de la taille de la hotte.

**ES** Los filtros de acero inoxidable se venden por separado. El número de filtros varía según el tamaño de la campana.



As hottes não são fornecidas pré-furadas, conferindo maior liberdade para a sua instalação.

**EN** Hoods are not supplied pre-drilled, giving bigger freedom for installation.

**FR** Les hottes ne sont pas fournies pré-perçées, ce qui donne une plus grande liberté pour l'installation.

**ES** Las campanas no se suministran preperforadas, lo que proporciona una mayor libertad de instalación.



O embalamento das hottes é reforçado, mediante uma estrutura em madeira.

**EN** Hoods packaging is reinforced by a wooden structure/frame.

**FR** L'emballage des hottes est renforcé par un cadre en bois.

**ES** El embalaje de las campanas es reforzado por un marco de madera.

# HOTTE SKETCH

SKETCH HOOD \* HOTTE SKETCH \* CAMPANA SKETCH





## HOTTE COMPENSADA SKETCH

SKETCH HOOD W/ COMPENSATION \* HOTTE À COMPENSATION SKETCH  
\* CAMPANA COMPENSADA SKETCH



PT

- Design inovador
- Construção geral em aço inox alimentar
- Com sistema de compensação de ar (hotte compensada)
- Disponível com ou sem motor de extração
- Inclui comando frontal, com 5 velocidades
- Controle de iluminação on/off
- Luminária de trabalho embutida, protegida por vidro temperado
- Lâmpada led amovível (T8)
- Versão mural standard (simples)
- Disponível em formato de ilha/central (dupla)
- Filtros em aço inox vendidos em separado
- Fornecidas montadas
- Fácil de limpar
- Hotte Standard: a conduta de ventilação superior é opcional, mediante pedido. Hotte Dupla: a conduta faz parte integrante.

EN

- Innovative design
- General construction in food grade stainless steel
- With air compensation system (compensated hood)
- Available with or without extraction motor
- Includes front control with 5 speeds
- On/off lighting control
- Built-in work light, protected by tempered glass
- Removable led lamp (T8)
- Standard wall-mounted version (simple)
- Available in island/central version (double)
- Stainless steel filters sold separately
- Supplied assembled
- Easy to clean
- Standard Hood: the upper ventilation duct is optional, on request. Double Hood: the duct is an integral part.

FR

- Design innovant
- Construction générale en acier inox de qualité alimentaire
- Avec système de compensation d'air (hotte compensée)
- Disponible avec ou sans moteur d'extraction
- Comprend une commande frontale à 5 vitesses
- Commande d'éclairage marche/arrêt
- Éclairage de travail encastré, protégée par un verre trempé
- Lampe à led amovible (T8)
- Version murale standard (simple)
- Disponible en version îlot/central (double)
- Filtres en acier inoxydable vendus séparément
- Fourni assemblé
- Facile à nettoyer
- Hotte standard: le conduit de ventilation supérieur est en option, sur demande. Double hotte: le conduit fait partie intégrante de l'appareil.

ES

- Diseño innovador
- Construcción general en acero inox de calidad alimentaria
- Con sistema de compensación de aire (campana compensada)
- Disponible con o sin motor de extracción
- Incluye control frontal con 5 velocidades
- Control de la iluminación de encendido/apagado
- Lámpara de trabajo incorporada, protegida por un vidrio templado
- Lámpara led extraíble (T8)
- Versión mural estándar (simple)
- Disponible en formato isla/central (doble)
- Los filtros de acero inox se venden por separado
- Se suministra montada
- Fácil de limpiar
- Campana estándar: el conducto de ventilación es opcional, bajo pedido. Doble campana: el conducto es una parte integral.

**SEM MOTOR DE EXTRAÇÃO**  
 WITHOUT EXTRACTION MOTOR  
 SANS MOTEUR D'EXTRACTION  
 SIN MOTOR DE EXTRACCIÓN

W x D x H (mm)	REF.	WEIGHT (KG)	Nº OF FILTERS	Nº OF LED LAMPS	Nº OF VALVES	EURO (€)
PROFUNDIDADE 700		DEPTH 700 * PROFONDEUR 700 * PROFUNDIDAD 700				
1400x700x630	31HT140101	78	3 (400x500x20)	1x T8	1	
1500x700x630	31HT140102	80	3 (400x500x20)	1x T8	1	
1600x700x630	31HT140103	81	3 (400x500x20)	1x T8	1	
1800x700x630	31HT140104	85	4 (400x500x20)	1x T8	1	
2000x700x630	31HT140105	89	4 (400x500x20)	1x T8	1	
2200x700x630	31HT140106	92	4 (400x500x20)	1x T8	2	



**COM MOTOR DE EXTRAÇÃO**  
 WITH EXTRACTION MOTOR  
 AVEC MOTEUR D'EXTRACTION  
 CON MOTOR DE EXTRACCIÓN

W x D x H (mm)	REF.	WEIGHT (KG)	Nº OF FILTERS	Nº OF LED LAMPS	Nº OF VALVES	EURO (€)
PROFUNDIDADE 700		DEPTH 700 * PROFONDEUR 700 * PROFUNDIDAD 700				
1400x700x630	31HT120101	92	3 (400x500x20)	1x T8	1	
1500x700x630	31HT120102	94	3 (400x500x20)	1x T8	1	
1600x700x630	31HT120103	95	3 (400x500x20)	1x T8	1	
1800x700x630	31HT120104	99	4 (400x500x20)	1x T8	1	
2000x700x630	31HT120105	103	4 (400x500x20)	1x T8	1	
2200x700x630	31HT120106	106	4 (400x500x20)	1x T8	2	



**FILTROS AÇO INOX**  
 STAINLESS STEEL FILTERS  
 FILTRES ACIER INOX  
 FILTROS ACERO INOX

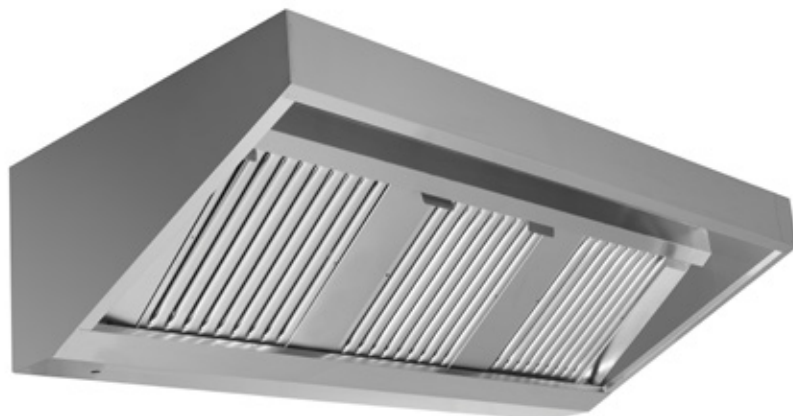
W x D x H (mm)	REF.	EURO (€)
400x500x20	1MS0084006	

# HOTTES INCLINADAS

SLOPING HOODS \* HOTTES INCLINÉES \* CAMPANAS INCLINADAS

## HOTTE FR1 MODULAR

FR1 MODULAR HOOD \* HOTTE FR1 MODULAIRE \* CAMPANA FR1 MODULAR



SEM MOTOR DE EXTRAÇÃO  
WITHOUT EXTRACTION MOTOR  
SANS MOTEUR D'EXTRACTION  
SIN MOTOR DE EXTRACCIÓN

W x D x H (mm)	REF.	WEIGHT (KG)	Nº OF FILTERS	Nº OF LAMPS	Nº OF VALVES	EURO (€)
PROFUNDIDADE 700		DEPTH 700 * PROFONDEUR 700 * PROFUNDIDAD 700				
800x700x450	31HT070101-43	35	1 (400x400x20)	1x 600 (6500 k)	1	
1000x700x450	31HT070102-43	39	2 (400x400x20)	1x 600 (6500 k)	1	
1200x700x450	31HT070103-43	43	2 (400x400x20)	1x 600 (6500 k)	1	
1400x700x450	31HT070104-43	50	3 (400x400x20)	1x 600 (6500 k)	1	
1500x700x450	31HT070105-43	52	3 (400x400x20)	1x 1200 (6500 k)	1	
1600x700x450	31HT070106-43	55,5	3 (400x400x20)	1x 1200 (6500 k)	1	
1800x700x450	31HT070107-43	59	3 (400x400x20)	1x 1500 (6500 k)	1	
2000x700x450	31HT070108-43	63	3 (400x400x20)	1x 1500 (6500 k)	1	
2200x700x450	31HT070109-43	69	4 (400x400x20)	1x 1500 (6500 k)	2	
2400x700x450	31HT070110-43	72	4 (400x400x20)	2x 600 (6500 k)	2	
2600x700x450	31HT070111-43	76	4 (400x400x20)	2x 600 (6500 k)	2	
2800x700x450	31HT070112-43	81,5	5 (400x400x20)	2x 600 (6500 k)	2	
3000x700x450	31HT070113-43	89	6 (400x400x20)	2x 1200 (6500 k)	2	

**SEM MOTOR DE EXTRAÇÃO**  
**WITHOUT EXTRACTION MOTOR**  
**SANS MOTEUR D'EXTRACTION**  
**SIN MOTOR DE EXTRACCIÓN**

W x D x H (mm)	REF.	WEIGHT (KG)	Nº OF FILTERS	Nº OF LAMPS	Nº OF VALVES	EURO (€)
<b>PROFUNDIDADE 900</b>		<b>DEPTH 900 * PROFONDEUR 900 * PROFUNDIDAD 900</b>				
800x900x450	31HT070201-43	40,5	1 (400x500x20)	1x 600 (6500 k)	1	
1000x900x450	31HT070202-43	45	2 (400x500x20)	1x 600 (6500 k)	1	
1200x900x450	31HT070203-43	49,5	2 (400x500x20)	1x 600 (6500 k)	1	
1400x900x450	31HT070204-43	54,6	3 (400x500x20)	1x 600 (6500 k)	1	
1500x900x450	31HT070205-43	58	3 (400x500x20)	1x 1200 (6500 k)	1	
1600x900x450	31HT070206-43	61,5	3 (400x500x20)	1x 1200 (6500 k)	1	
1800x900x450	31HT070207-43	66	3 (400x500x20)	1x 1500 (6500 k)	1	
2000x900x450	31HT070208-43	70	3 (400x500x20)	1x 1500 (6500 k)	1	
2200x900x450	31HT070209-43	76	4 (400x500x20)	1x 1500 (6500 k)	2	
2400x900x450	31HT070210-43	79,8	4 (400x500x20)	2x 600 (6500 k)	2	
2600x900x450	31HT070211-43	83,8	4 (400x500x20)	2x 600 (6500 k)	2	
2800x900x450	31HT070212-43	90,5	5 (400x500x20)	2x 600 (6500 k)	2	
3000x900x450	31HT070213-43	99	6 (400x500x20)	2x 1200 (6500 k)	2	

W x D x H (mm)	REF.	WEIGHT (KG)	Nº OF FILTERS	Nº OF LAMPS	Nº OF VALVES	EURO (€)
<b>PROFUNDIDADE 1100</b>		<b>DEPTH 1100 * PROFONDEUR 1100 * PROFUNDIDAD 1100</b>				
800x1100x450	31HT070301-43	44	1 (400x500x20)	1x 600 (6500 k)	1	
1000x1100x450	31HT070302-43	49	2 (400x500x20)	1x 600 (6500 k)	1	
1200x1100x450	31HT070303-43	54,5	2 (400x500x20)	1x 600 (6500 k)	1	
1400x1100x450	31HT070304-43	60	3 (400x500x20)	1x 600 (6500 k)	1	
1500x1100x450	31HT070305-43	64	3 (400x500x20)	1x 1200 (6500 k)	1	
1600x1100x450	31HT070306-43	67,5	3 (400x500x20)	1x 1200 (6500 k)	1	
1800x1100x450	31HT070307-43	73	3 (400x500x20)	1x 1500 (6500 k)	1	
2000x1100x450	31HT070308-43	78,5	3 (400x500x20)	1x 1500 (6500 k)	1	
2200x1100x450	31HT070309-43	83,5	4 (400x500x20)	1x 1500 (6500 k)	2	
2400x1100x450	31HT070310-43	89	4 (400x500x20)	2x 600 (6500 k)	2	
2600x1100x450	31HT070311-43	94	4 (400x500x20)	2x 600 (6500 k)	2	
2800x1100x450	31HT070312-43	99,5	5 (400x500x20)	2x 600 (6500 k)	2	
3000x1100x450	31HT070313-43	107	6 (400x500x20)	2x 1200 (6500 k)	2	

**FILTROS AÇO INOX**  
**STAINLESS STEEL FILTERS**  
**FILTRES ACIER INOX**  
**FILTROS ACERO INOX**

W x D x H (mm)	REF.	EURO (€)
400x400x20	1MS0084005	
400x500x20	1MS0084006	



# HOTTES INCLINADAS

SLOPING HOODS \* HOTTES INCLINÉES \* CAMPANAS INCLINADAS

## HOTTE FR1 MODULAR C/ MOTOR

FR1 MODULAR HOOD W/ MOTOR \* HOTTE FR1 MODULAIRE A/ MOTEUR  
\* CAMPANA FR1 MODULAR C/ MOTOR



COM MOTOR DE EXTRAÇÃO  
WITH EXTRACTION MOTOR  
AVEC MOTEUR D'EXTRACTION  
CON MOTOR DE EXTRACCIÓN

W x D x H (mm)	REF.	WEIGHT (KG)	Nº OF FILTERS	Nº OF LAMPS	Nº OF VALVES	EURO (€)
PROFUNDIDADE 700		DEPTH 700 * PROFONDEUR 700 * PROFUNDIDAD 700				
800x700x500	31HT090101-43	52	1 (400x400x20)	1x 600 (6500 k)	1	
1000x700x500	31HT090102-43	56	2 (400x400x20)	1x 600 (6500 k)	1	
1200x700x500	31HT090103-43	61	2 (400x400x20)	1x 600 (6500 k)	1	
1400x700x500	31HT090104-43	73	3 (400x400x20)	1x 600 (6500 k)	1	
1500x700x500	31HT090105-43	75	3 (400x400x20)	1x 1200 (6500 k)	1	
1600x700x500	31HT090106-43	78	3 (400x400x20)	1x 1200 (6500 k)	1	
1800x700x500	31HT090107-43	83	3 (400x400x20)	1x 1500 (6500 k)	1	
2000x700x500	31HT090108-43	89	3 (400x400x20)	1x 1500 (6500 k)	1	
2200x700x500	31HT090109-43	94	4 (400x400x20)	1x 1500 (6500 k)	2	
2400x700x500	31HT090110-43	98	4 (400x400x20)	2x 600 (6500 k)	2	
2600x700x500	31HT090111-43	102	4 (400x400x20)	2x 600 (6500 k)	2	
2800x700x500	31HT090112-43	107	5 (400x400x20)	2x 600 (6500 k)	2	
3000x700x500	31HT090113-43	113	6 (400x400x20)	2x 1200 (6500 k)	2	



COM MOTOR DE EXTRAÇÃO  
WITH EXTRACTION MOTOR  
AVEC MOTEUR D'EXTRACTION  
CON MOTOR DE EXTRACCIÓN

W x D x H (mm)	REF.	WEIGHT (KG)	Nº OF FILTERS	Nº OF LAMPS	Nº OF VALVES	EURO (€)
PROFUNDIDADE 900		DEPTH 900 * PROFONDEUR 900 * PROFUNDIDAD 900				
800x900x500	31HT090201-43	62	1 (400x500x20)	1x 600 (6500 k)	1	
1000x900x500	31HT090202-43	69	2 (400x500x20)	1x 600 (6500 k)	1	
1200x900x500	31HT090203-43	74	2 (400x500x20)	1x 600 (6500 k)	1	
1400x900x500	31HT090204-43	79	3 (400x500x20)	1x 600 (6500 k)	1	
1500x900x500	31HT090205-43	82	3 (400x500x20)	1x 1200 (6500 k)	1	
1600x900x500	31HT090206-43	86	3 (400x500x20)	1x 1200 (6500 k)	1	
1800x900x500	31HT090207-43	91	3 (400x500x20)	1x 1500 (6500 k)	1	
2000x900x500	31HT090208-43	97	3 (400x500x20)	1x 1500 (6500 k)	1	
2200x900x500	31HT090209-43	102	4 (400x500x20)	1x 1500 (6500 k)	2	
2400x900x500	31HT090210-43	105	4 (400x500x20)	2x 600 (6500 k)	2	
2600x900x500	31HT090211-43	111	4 (400x500x20)	2x 600 (6500 k)	2	
2800x900x500	31HT090212-43	116	5 (400x500x20)	2x 600 (6500 k)	2	
3000x900x500	31HT090213-43	122	6 (400x500x20)	2x 1200 (6500 k)	2	

W x D x H (mm)	REF.	WEIGHT (KG)	Nº OF FILTERS	Nº OF LAMPS	Nº OF VALVES	EURO (€)
PROFUNDIDADE 1100		DEPTH 1100 * PROFONDEUR 1100 * PROFUNDIDAD 1100				
800x1100x500	31HT090301-43	63	1 (400x500x20)	1x 600 (6500 k)	1	
1000x1100x500	31HT090302-43	75	2 (400x500x20)	1x 600 (6500 k)	1	
1200x1100x500	31HT090303-43	81	2 (400x500x20)	1x 600 (6500 k)	1	
1400x1100x500	31HT090304-43	87	3 (400x500x20)	1x 600 (6500 k)	1	
1500x1100x500	31HT090305-43	90	3 (400x500x20)	1x 1200 (6500 k)	1	
1600x1100x500	31HT090306-43	93	3 (400x500x20)	1x 1200 (6500 k)	1	
1800x1100x500	31HT090307-43	100	3 (400x500x20)	1x 1500 (6500 k)	1	
2000x1100x500	31HT090308-43	105	3 (400x500x20)	1x 1500 (6500 k)	1	
2200x1100x500	31HT090309-43	111	4 (400x500x20)	1x 1500 (6500 k)	2	
2400x1100x500	31HT090310-43	116	4 (400x500x20)	2x 600 (6500 k)	2	
2600x1100x500	31HT090311-43	122	4 (400x500x20)	2x 600 (6500 k)	2	
2800x1100x500	31HT090312-43	128	5 (400x500x20)	2x 600 (6500 k)	2	
3000x1100x500	31HT090313-43	136	6 (400x500x20)	2x 1200 (6500 k)	2	

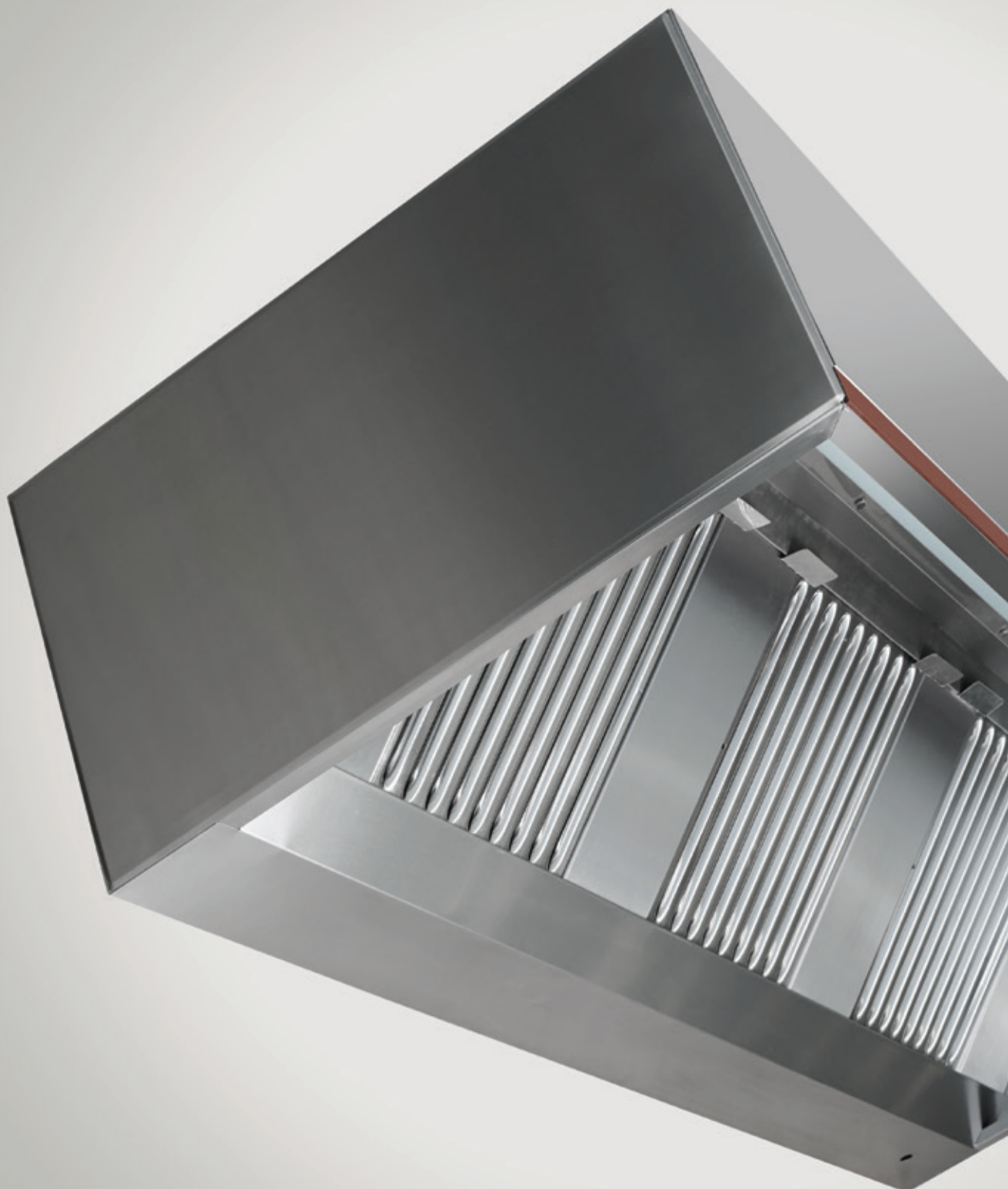
FILTROS AÇO INOX  
STAINLESS STEEL FILTERS  
FILTRES ACIER INOX  
FILTROS ACERO INOX

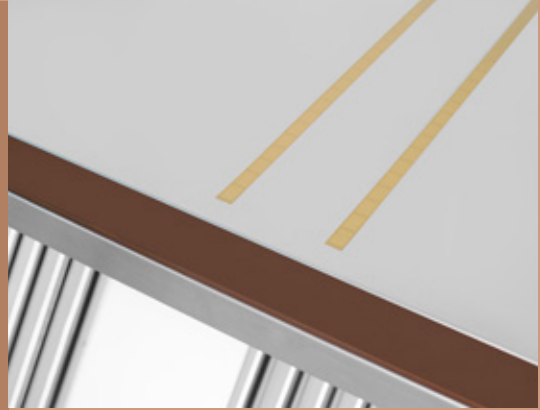
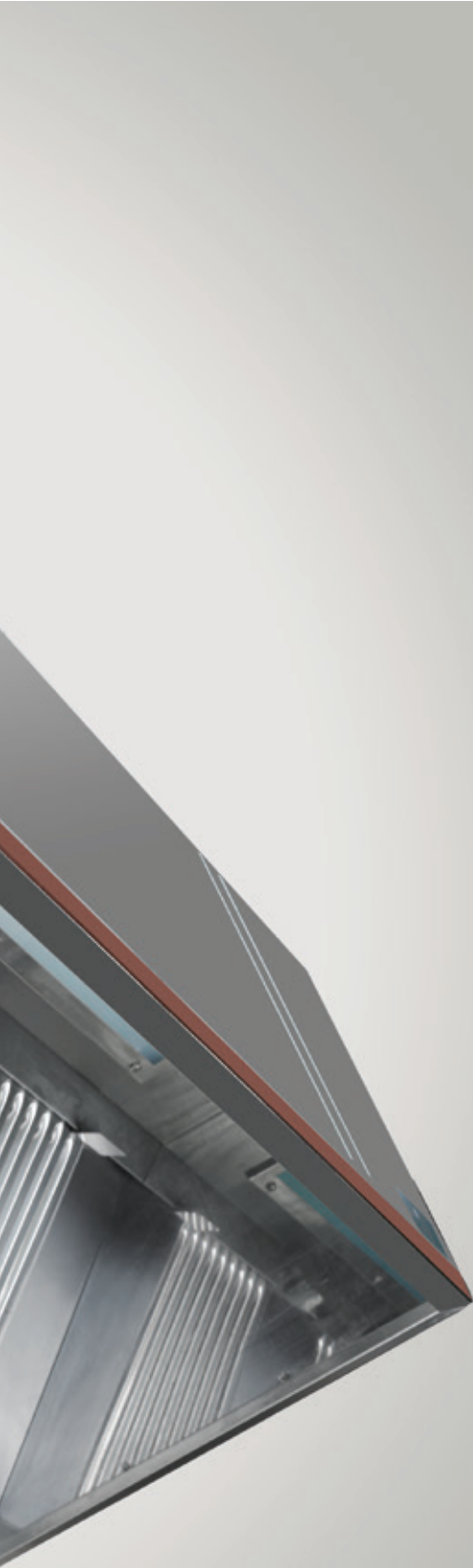
W x D x H (mm)	REF.	EURO (€)
400x400x20	1MS0084005	
400x500x20	1MS0084006	



# HOTTE LIGHTNESS

LIGHTNESS HOOD \* HOTTE LIGHTNESS \* CAMPANA LIGHTNESS





# HOTTES RETANGULARES

RECTANGULAR HOODS \* HOTTES RECTANGULAIRES \* CAMPANAS RECTANGULARES

# HOTTE LIGHTNESS

LIGHTNESS HOOD \* HOTTE LIGHTNESS \* CAMPANA LIGHTNESS



PT

- Design personalizável
- Construção geral em aço inox alimentar
- Disponível com ou sem motor de extração
- Inclui comando frontal com 5 velocidades
- Controle de iluminação on/off
- Luminária de trabalho encastrada, protegida por vidro temperado
- Lâmpada led amovível (T8)
- Versão mural standard (simples)
- Disponível em formato de ilha/central (dupla)
- Faixas de led decorativas com sistema de cores RGB
- Possibilidade de personalizar as faixas de led e o perfil de alumínio colorido frontal
- Filtros em aço inox não incluídos
- Fornecidas montadas
- Fácil de limpar
- Dimensões standard: Largura 1000 a 2200 mm / Profundidade 700, 900 e 1100 mm / Altura 500 mm

EN

- Customisable design
- General food grade stainless steel construction
- Available with or without extraction motor
- Includes front control with 5 speeds
- On/off illumination control
- Recessed work light, protected by toughened glass
- Removable led lamp (T8)
- Standard wall version (single)
- Available in island/central (double) format
- Decorative LED strips with RGB colour system
- Possibility of customising the led strips and the front coloured aluminium profile
- Stainless steel filters not included
- Supplied assembled
- Easy to clean
- Standard dimensions: Width 1000 to 2200 mm / Depth 700, 900 and 1100 mm / Height 500 mm

FR

- Design personnalisable
- Construction générale en acier inoxydable de qualité alimentaire
- Disponible avec ou sans moteur d'extraction
- Comprend une commande frontale à 5 vitesses
- Contrôle de l'éclairage on/off
- Lampe de travail encastrée, protégée par un verre trempé
- Lampe à led amovible (T8)
- Version murale standard (simple)
- Disponible en format îlot/central (double)
- Bandes LED décoratives avec système de couleurs RGB
- Possibilité de personnaliser les bandes lumineuses et le profilé en aluminium de couleur frontale.
- Filtres en acier inoxydable non inclus
- Fournie assemblée
- Facile à nettoyer
- Dimensions standard : Largeur 1000 à 2200 mm / Profondeur 700, 900 et 1100 mm / Hauteur 500 mm

ES

- Diseño personalizable
- Construcción general en acero inoxidable de calidad alimentaria
- Disponible con o sin motor de extracción
- Incluye control frontal con 5 velocidades
- Control de la iluminación de encendido/apagado
- Luz de trabajo empotrada, protegida por un vidrio templado
- Lámpara led extraíble (T8)
- Versión mural estándar (simple)
- Disponible en formato isla/central (doble)
- Tiras LED decorativas con sistema de color RGB
- Posibilidad de personalizar las tiras de leds y el perfil frontal de aluminio de color
- Filtros de acero inoxidable no incluidos
- Se suministra montada
- Fácil de limpiar
- Dimensiones estándar: Ancho 1000 a 2200 mm / Profundidad 700, 900 y 1100 mm / Altura 500 mm

**SEM MOTOR DE EXTRAÇÃO**  
**WITHOUT EXTRACTION MOTOR**  
**SANS MOTEUR D'EXTRACTION**  
**SIN MOTOR DE EXTRACCIÓN**

W x D x H (mm)	REF.	WEIGHT (KG)	Nº OF FILTERS	Nº OF LED LAMPS	Nº OF VALVES	EURO (€)
<b>PROFUNDIDADE 700</b> DEPTH 700 * PROFONDEUR 700 * PROFUNDIDAD 700						
1000x700x500	31HT130101	46	2 (400x500x20)	1x T8	1	
1200x700x500	31HT130102	31	2 (400x500x20)	1x T8	1	
1400x700x500	31HT130103	62	3 (400x500x20)	1x T8	1	
1500x700x500	31HT130104	64	3 (400x500x20)	1x T8	1	
1600x700x500	31HT130105	67	3 (400x500x20)	1x T8	1	
1800x700x500	31HT130106	73	4 (400x500x20)	1x T8	1	
2000x700x500	31HT130107	79	4 (400x500x20)	1x T8	1	
2200x700x500	31HT130108	84	4 (400x500x20)	1x T8	2	

<b>PROFUNDIDADE 900</b> DEPTH 900 * PROFONDEUR 900 * PROFUNDIDAD 900						
1000x900x500	31HT130201	52	2 (400x500x20)	1x T8	1	
1200x900x500	31HT130202	57	2 (400x500x20)	1x T8	1	
1400x900x500	31HT130203	68	3 (400x500x20)	1x T8	1	
1500x900x500	31HT130204	71	3 (400x500x20)	1x T8	1	
1600x900x500	31HT130205	74	3 (400x500x20)	1x T8	1	
1800x900x500	31HT130206	80	4 (400x500x20)	1x T8	1	
2000x900x500	31HT130207	86	4 (400x500x20)	1x T8	1	
2200x900x500	31HT130208	91	4 (400x500x20)	1x T8	2	

<b>PROFUNDIDADE 1100</b> DEPTH 1100 * PROFONDEUR 1100 * PROFUNDIDAD 1100						
1000x1100x500	31HT130301	58	2 (400x500x20)	1x T8	1	
1200x1100x500	31HT130302	63	2 (400x500x20)	1x T8	1	
1400x1100x500	31HT130303	74	3 (400x500x20)	1x T8	1	
1500x1100x500	31HT130304	77	3 (400x500x20)	1x T8	1	
1600x1100x500	31HT130305	81	3 (400x500x20)	1x T8	1	
1800x1100x500	31HT130306	87	4 (400x500x20)	1x T8	1	
2000x1100x500	31HT130307	93	4 (400x500x20)	1x T8	1	
2200x1100x500	31HT130308	98	4 (400x500x20)	1x T8	2	

**FILTROS AÇO INOX**  
**STAINLESS STEEL FILTERS**  
**FILTRES ACIER INOX**  
**FILTROS ACERO INOX**

W x D x H (mm)	REF.	EURO (€)
400x500x20	1MS0084006	



# HOTTES RETANGULARES

RECTANGULAR HOODS \* HOTTES RECTANGULAIRES \* CAMPANAS RECTANGULARES

# HOTTE LIGHTNESS

LIGHTNESS HOOD \* HOTTE LIGHTNESS \* CAMPANA LIGHTNESS

COM MOTOR DE EXTRAÇÃO  
WITH EXTRACTION MOTOR  
AVEC MOTEUR D'EXTRACTION  
CON MOTOR DE EXTRACCIÓN

W x D x H (mm)	REF.	WEIGHT (KG)	Nº OF FILTERS	Nº OF LED LAMPS	Nº OF VALVES	EURO (€)
PROFUNDIDADE 700 DEPTH 700 * PROFONDEUR 700 * PROFUNDIDAD 700						
1000x700x500	31HT110101	60	2 (400x500x20)	1x T8	1	
1200x700x500	31HT110102	65	2 (400x500x20)	1x T8	1	
1400x700x500	31HT110103	76	3 (400x500x20)	1x T8	1	
1500x700x500	31HT110104	78	3 (400x500x20)	1x T8	1	
1600x700x500	31HT110105	81	3 (400x500x20)	1x T8	1	
1800x700x500	31HT110106	87	4 (400x500x20)	1x T8	1	
2000x700x500	31HT110107	93	4 (400x500x20)	1x T8	1	
2200x700x500	31HT110108	98	4 (400x500x20)	1x T8	2	

W x D x H (mm)	REF.	WEIGHT (KG)	Nº OF FILTERS	Nº OF LED LAMPS	Nº OF VALVES	EURO (€)
PROFUNDIDADE 900 DEPTH 900 * PROFONDEUR 900 * PROFUNDIDAD 900						
1000x900x500	31HT110201	66	2 (400x500x20)	1x T8	1	
1200x900x500	31HT110202	71	2 (400x500x20)	1x T8	1	
1400x900x500	31HT110203	82	3 (400x500x20)	1x T8	1	
1500x900x500	31HT110204	85	3 (400x500x20)	1x T8	1	
1600x900x500	31HT110205	88	3 (400x500x20)	1x T8	1	
1800x900x500	31HT110206	94	4 (400x500x20)	1x T8	1	
2000x900x500	31HT110207	100	4 (400x500x20)	1x T8	1	
2200x900x500	31HT110208	105	4 (400x500x20)	1x T8	2	

W x D x H (mm)	REF.	WEIGHT (KG)	Nº OF FILTERS	Nº OF LED LAMPS	Nº OF VALVES	EURO (€)
PROFUNDIDADE 1100 DEPTH 1100 * PROFONDEUR 1100 * PROFUNDIDAD 1100						
1000x1100x500	31HT110301	72	2 (400x500x20)	1x T8	1	
1200x1100x500	31HT110302	77	2 (400x500x20)	1x T8	1	
1400x1100x500	31HT110303	88	3 (400x500x20)	1x T8	1	
1500x1100x500	31HT110304	91	3 (400x500x20)	1x T8	1	
1600x1100x500	31HT110305	95	3 (400x500x20)	1x T8	1	
1800x1100x500	31HT110306	101	4 (400x500x20)	1x T8	1	
2000x1100x500	31HT110307	107	4 (400x500x20)	1x T8	1	
2200x1100x500	31HT110308	112	4 (400x500x20)	1x T8	2	

FILTROS AÇO INOX  
STAINLESS STEEL FILTERS  
FILTRES ACIER INOX  
FILTROS ACERO INOX

W x D x H (mm)	REF.	EURO (€)
400x500x20	1MS0084006	



## HOTTE RECT MODULAR

RECT MODULAR HOOD \* HOTTE RECT MODULAIRE \* CAMPANA RECT MODULAR



FILTROS AÇO INOX  
STAINLESS STEEL FILTERS  
FILTRES ACIER INOX  
FILTROS ACERO INOX

W x D x H (mm)	REF.	EURO (€)
400x400x20	1MS0084005	
400x500x20	1MS0084006	

SEM MOTOR DE EXTRAÇÃO  
WITHOUT EXTRACTION MOTOR  
SANS MOTEUR D'EXTRACTION  
SIN MOTOR DE EXTRACCIÓN

W x D x H (mm)	REF.	WEIGHT (KG)	Nº OF FILTERS	Nº OF LAMPS	Nº OF VALVES	EURO (€)
PROFUNDIDADE 700		DEPTH 700 * PROFONDEUR 700 * PROFUNDIDAD 700				
800x700x450	31HT080101-43	37	1 (400x400x20)	1x 600 (6500 k)	1	
1000x700x450	31HT080102-43	43	2 (400x400x20)	1x 600 (6500 k)	1	
1200x700x450	31HT080103-43	47	2 (400x400x20)	1x 600 (6500 k)	1	
1400x700x450	31HT080104-43	52,7	3 (400x400x20)	1x 600 (6500 k)	1	
1500x700x450	31HT080105-43	13	3 (400x400x20)	1x 1200 (6500 k)	1	
1600x700x450	31HT080106-43	58,7	3 (400x400x20)	1x 1200 (6500 k)	1	
1800x700x450	31HT080107-43	64,7	4 (400x400x20)	1x 1500 (6500 k)	1	
2000x700x450	31HT080108-43	69	4 (400x400x20)	1x 1500 (6500 k)	1	
2200x700x450	31HT080109-43	73	4 (400x400x20)	1x 1500 (6500 k)	2	
2400x700x450	31HT080110-43	77	4 (400x400x20)	2x 600 (6500 k)	2	
2600x700x450	31HT080111-43	81,6	4 (400x400x20)	2x 600 (6500 k)	2	
2800x700x450	31HT080112-43	85,6	4 (400x400x20)	2x 600 (6500 k)	2	
3000x700x450	31HT080113-43	93	5 (400x400x20)	2x 1200 (6500 k)	2	

# HOTTES RETANGULARES

RECTANGULAR HOODS \* HOTTES RECTANGULAIRES \* CAMPANAS RECTANGULARES

SEM MOTOR DE EXTRAÇÃO  
WITHOUT EXTRACTION MOTOR  
SANS MOTEUR D'EXTRACTION  
SIN MOTOR DE EXTRACCIÓN

W x D x H (mm)	REF.	WEIGHT (KG)	Nº OF FILTERS	Nº OF LAMPS	Nº OF VALVES	EURO (€)
<b>PROFUNDIDADE 900</b>		<b>DEPTH 900 * PROFONDEUR 900 * PROFUNDIDAD 900</b>				
800x900x450	31HT080201-43	45	1 (400x500x20)	1x 600 (6500 k)	1	
1000x900x450	31HT080202-43	51	2 (400x500x20)	1x 600 (6500 k)	1	
1200x900x450	31HT080203-43	56	2 (400x500x20)	1x 600 (6500 k)	1	
1400x900x450	31HT080204-43	62	3 (400x500x20)	1x 600 (6500 k)	1	
1500x900x450	31HT080205-43	64	3 (400x500x20)	1x 1200 (6500 k)	1	
1600x900x450	31HT080206-43	66	3 (400x500x20)	1x 1200 (6500 k)	1	
1800x900x450	31HT080207-43	72	4 (400x500x20)	1x 1500 (6500 k)	1	
2000x900x450	31HT080208-43	77	4 (400x500x20)	1x 1500 (6500 k)	1	
2200x900x450	31HT080209-43	83	4 (400x500x20)	1x 1500 (6500 k)	2	
2400x900x450	31HT080210-43	88	4 (400x500x20)	2x 600 (6500 k)	2	
2600x900x450	31HT080211-43	94	4 (400x500x20)	2x 600 (6500 k)	2	
2800x900x450	31HT080212-43	100	4 (400x500x20)	2x 600 (6500 k)	2	
3000x900x450	31HT080213-43	106	5 (400x500x20)	2x 1200 (6500 k)	2	

<b>PROFUNDIDADE 1100</b>		<b>DEPTH 1100 * PROFONDEUR 1100 * PROFUNDIDAD 1100</b>				
800x1100x450	31HT080301-43	52,5	1 (400x500x20)	1x 600 (6500 k)	1	
1000x1100x450	31HT080302-43	57	2 (400x500x20)	1x 600 (6500 k)	1	
1200x1100x450	31HT080303-43	60,7	2 (400x500x20)	1x 600 (6500 k)	1	
1400x1100x450	31HT080304-43	67	3 (400x500x20)	1x 600 (6500 k)	1	
1500x1100x450	31HT080305-43	70,7	3 (400x500x20)	1x 1200 (6500 k)	1	
1600x1100x450	31HT080306-43	74	3 (400x500x20)	1x 1200 (6500 k)	1	
1800x1100x450	31HT080307-43	80	4 (400x500x20)	1x 1500 (6500 k)	1	
2000x1100x450	31HT080308-43	85	4 (400x500x20)	1x 1500 (6500 k)	1	
2200x1100x450	31HT080309-43	91,5	4 (400x500x20)	1x 1500 (6500 k)	2	
2400x1100x450	31HT080310-43	98	4 (400x500x20)	2x 600 (6500 k)	2	
2600x1100x450	31HT080311-43	103	4 (400x500x20)	2x 600 (6500 k)	2	
2800x1100x450	31HT080312-43	109,5	4 (400x500x20)	2x 600 (6500 k)	2	
3000x1100x450	31HT080313-43	117	5 (400x500x20)	2x 1200 (6500 k)	2	

<b>PROFUNDIDADE 1400</b>		<b>DEPTH 1400 * PROFONDEUR 1400 * PROFUNDIDAD 1400</b>				
800x1400x450	31HT080401-43	58,5	1 (400x500x20)	1x 600 (6500 k)	1	
1000x1400x450	31HT080402-43	63	2 (400x500x20)	1x 600 (6500 k)	1	
1200x1400x450	31HT080403-43	68	2 (400x500x20)	1x 600 (6500 k)	1	
1400x1400x450	31HT080404-43	75	3 (400x500x20)	1x 600 (6500 k)	1	
1500x1400x450	31HT080405-43	75,5	3 (400x500x20)	1x 1200 (6500 k)	1	
1600x1400x450	31HT080406-43	81	3 (400x500x20)	1x 1200 (6500 k)	1	
1800x1400x450	31HT080407-43	89,5	4 (400x500x20)	1x 1500 (6500 k)	1	
2000x1400x450	31HT080408-43	95,5	4 (400x500x20)	1x 1500 (6500 k)	1	
2200x1400x450	31HT080409-43	102	4 (400x500x20)	1x 1500 (6500 k)	2	
2400x1400x450	31HT080410-43	107	4 (400x500x20)	2x 600 (6500 k)	2	
2600x1400x450	31HT080411-43	114	4 (400x500x20)	2x 600 (6500 k)	2	
2800x1400x450	31HT080412-43	120	4 (400x500x20)	2x 600 (6500 k)	2	
3000x1400x450	31HT080413-43	128,8	5 (400x500x20)	2x 1200 (6500 k)	2	



## HOTTE RECT MODULAR C/ MOTOR

RECT MODULAR HOOD W/ MOTOR \* HOTTE RECT MODULAIRE A/ MOTEUR \*  
CAMPANA RECT MODULAR C/ MOTOR



FILTROS AÇO INOX  
STAINLESS STEEL FILTERS  
FILTRES ACIER INOX  
FILTROS ACERO INOX

W x D x H (mm)	REF.	EURO (€)
400x400x20	1MS0084005	
400x500x20	1MS0084006	

COM MOTOR DE EXTRAÇÃO  
WITH EXTRACTION MOTOR  
AVEC MOTEUR D'EXTRACTION  
CON MOTOR DE EXTRACCIÓN

W x D x H (mm)	REF.	WEIGHT (KG)	Nº OF FILTERS	Nº OF LAMPS	Nº OF VALVES	EURO (€)
PROFUNDIDADE 700 DEPTH 700 * PROFONDEUR 700 * PROFUNDIDAD 700						
800x700x500	31HT100101-43	53	1 (400x400x20)	1x 600 (6500 k)	1	
1000x700x500	31HT100102-43	57	2 (400x400x20)	1x 600 (6500 k)	1	
1200x700x500	31HT100103-43	62	2 (400x400x20)	1x 600 (6500 k)	1	
1400x700x500	31HT100104-43	73	3 (400x400x20)	1x 600 (6500 k)	1	
1500x700x500	31HT100105-43	75	3 (400x400x20)	1x 1200 (6500 k)	1	
1600x700x500	31HT100106-43	78	3 (400x400x20)	1x 1200 (6500 k)	1	
1800x700x500	31HT100107-43	84	4 (400x400x20)	1x 1500 (6500 k)	1	
2000x700x500	31HT100108-43	90	4 (400x400x20)	1x 1500 (6500 k)	1	
2200x700x500	31HT100109-43	95	4 (400x400x20)	1x 1500 (6500 k)	2	
2400x700x500	31HT100110-43	100	4 (400x400x20)	2x 600 (6500 k)	2	
2600x700x500	31HT100111-43	105	4 (400x400x20)	2x 600 (6500 k)	2	
2800x700x500	31HT100112-43	109	4 (400x400x20)	2x 600 (6500 k)	2	
3000x700x500	31HT100113-43	116	5 (400x400x20)	2x 1200 (6500 k)	2	

# HOTTES RETANGULARES

RECTANGULAR HOODS \* HOTTES RECTANGULAIRES \* CAMPANAS RECTANGULARES

COM MOTOR DE EXTRAÇÃO  
WITH EXTRACTION MOTOR  
AVEC MOTEUR D'EXTRACTION  
CON MOTOR DE EXTRACCIÓN

W x D x H (mm)	REF.	WEIGHT (KG)	Nº OF FILTERS	Nº OF LAMPS	Nº OF VALVES	EURO (€)
<b>PROFUNDIDADE 900</b>		<b>DEPTH 900 * PROFONDEUR 900 * PROFUNDIDAD 900</b>				
800x900x500	31HT100201-43	58	1 (400x500x20)	1x 600 (6500 k)	1	
1000x900x500	31HT100202-43	63	2 (400x500x20)	1x 600 (6500 k)	1	
1200x900x500	31HT100203-43	68	2 (400x500x20)	1x 600 (6500 k)	1	
1400x900x500	31HT100204-43	79	3 (400x500x20)	1x 600 (6500 k)	1	
1500x900x500	31HT100205-43	82	3 (400x500x20)	1x 1200 (6500 k)	1	
1600x900x500	31HT100206-43	85	3 (400x500x20)	1x 1200 (6500 k)	1	
1800x900x500	31HT100207-43	91	4 (400x500x20)	1x 1500 (6500 k)	1	
2000x900x500	31HT100208-43	97	4 (400x500x20)	1x 1500 (6500 k)	1	
2200x900x500	31HT100209-43	102	4 (400x500x20)	1x 1500 (6500 k)	2	
2400x900x500	31HT100210-43	107	4 (400x500x20)	2x 600 (6500 k)	2	
2600x900x500	31HT100211-43	112	4 (400x500x20)	2x 600 (6500 k)	2	
2800x900x500	31HT100212-43	117	4 (400x500x20)	2x 600 (6500 k)	2	
3000x900x500	31HT100213-43	124	5 (400x500x20)	2x 1200 (6500 k)	2	
<b>PROFUNDIDADE 1100</b>		<b>DEPTH 1100 * PROFONDEUR 1100 * PROFUNDIDAD 1100</b>				
800x1100x500	31HT100301-43	63	1 (400x500x20)	1x 600 (6500 k)	1	
1000x1100x500	31HT100302-43	69	2 (400x500x20)	1x 600 (6500 k)	1	
1200x1100x500	31HT100303-43	74	2 (400x500x20)	1x 600 (6500 k)	1	
1400x1100x500	31HT100304-43	85	3 (400x500x20)	1x 600 (6500 k)	1	
1500x1100x500	31HT100305-43	88	3 (400x500x20)	1x 1200 (6500 k)	1	
1600x1100x500	31HT100306-43	92	3 (400x500x20)	1x 1200 (6500 k)	1	
1800x1100x500	31HT100307-43	98	4 (400x500x20)	1x 1500 (6500 k)	1	
2000x1100x500	31HT100308-43	104	4 (400x500x20)	1x 1500 (6500 k)	1	
2200x1100x500	31HT100309-43	109	4 (400x500x20)	1x 1500 (6500 k)	2	
2400x1100x500	31HT100310-43	114	4 (400x500x20)	2x 600 (6500 k)	2	
2600x1100x500	31HT100311-43	119	4 (400x500x20)	2x 600 (6500 k)	2	
2800x1100x500	31HT100312-43	125	4 (400x500x20)	2x 600 (6500 k)	2	
3000x1100x500	31HT100313-43	132	5 (400x500x20)	2x 1200 (6500 k)	2	
<b>PROFUNDIDADE 1400</b>		<b>DEPTH 1400 * PROFONDEUR 1400 * PROFUNDIDAD 1400</b>				
800x1400x500	31HT100401-43	68	1 (400x500x20)	1x 600 (6500 k)	1	
1000x1400x500	31HT100402-43	73	2 (400x500x20)	1x 600 (6500 k)	1	
1200x1400x500	31HT100403-43	79	2 (400x500x20)	1x 600 (6500 k)	1	
1400x1400x500	31HT100404-43	89	3 (400x500x20)	1x 600 (6500 k)	1	
1500x1400x500	31HT100405-43	92	3 (400x500x20)	1x 1200 (6500 k)	1	
1600x1400x500	31HT100406-43	98	3 (400x500x20)	1x 1200 (6500 k)	1	
1800x1400x500	31HT100407-43	103	4 (400x500x20)	1x 1500 (6500 k)	1	
2000x1400x500	31HT100408-43	109	4 (400x500x20)	1x 1500 (6500 k)	1	
2200x1400x500	31HT100409-43	115	4 (400x500x20)	1x 1500 (6500 k)	2	
2400x1400x500	31HT100410-43	120	4 (400x500x20)	2x 600 (6500 k)	2	
2600x1400x500	31HT100411-43	125	4 (400x500x20)	2x 600 (6500 k)	2	
2800x1400x500	31HT100412-43	130	4 (400x500x20)	2x 600 (6500 k)	2	
3000x1400x500	31HT100413-43	137	5 (400x500x20)	2x 1200 (6500 k)	2	



**NEED MORE INFORMATION?  
IT'S EASY.**

We are at your disposal through  
the following means:

**bypnh.pt**  
**(+351) 234 690 190**  
**comercial@bypnh.pt**  
**comercial1@bypnh.pt**  
**administracao@bypnh.pt**



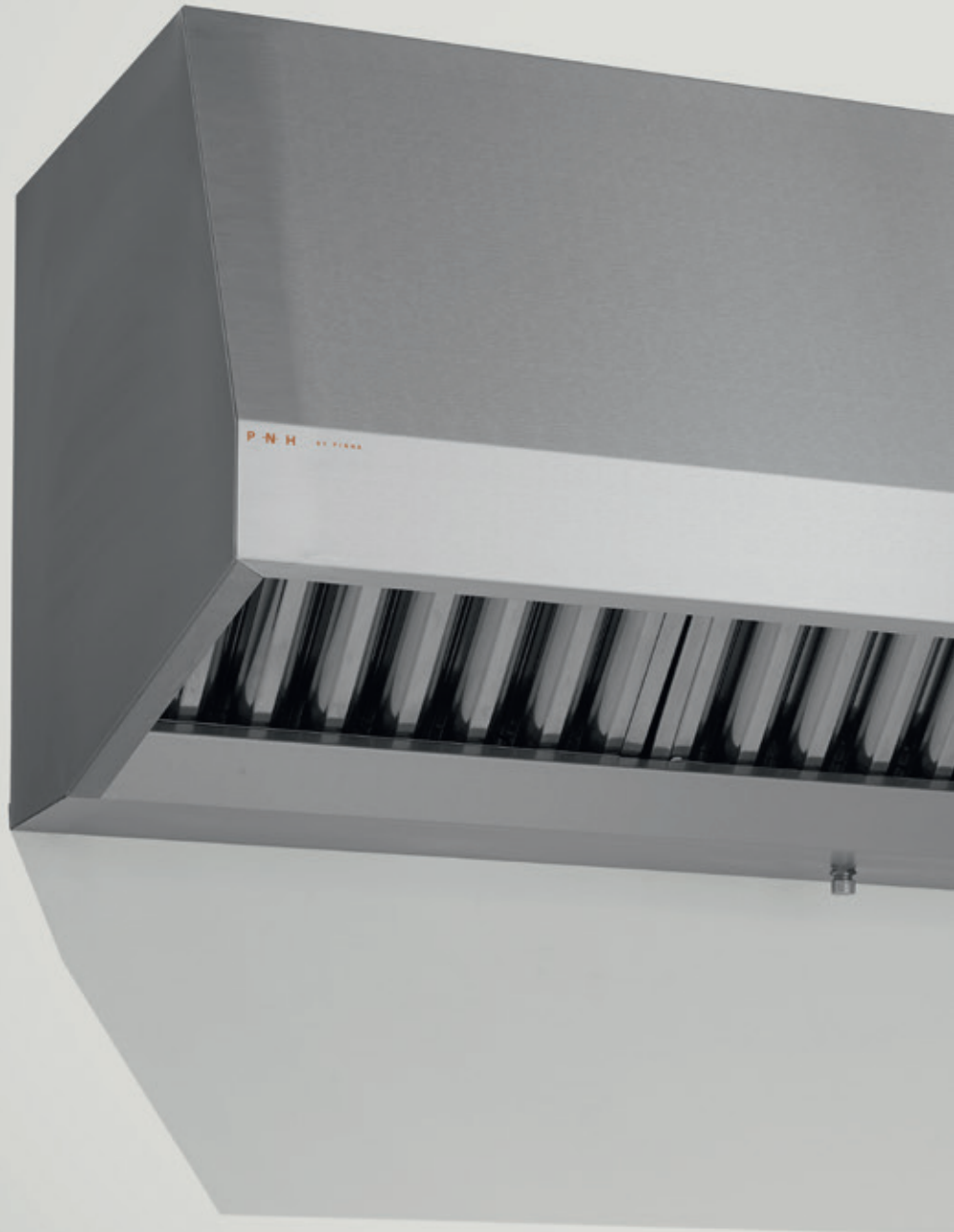
---

**PROFESSIONAL EXTRACTION SOLUTIONS**



P ~~N~~ H

PROFESSIONAL  
FURNITURE  
& INNOVATION



Cofinanciado por:



CAT/H21.R1